

**PR123**  
**ESPRESSO BIB APRON**

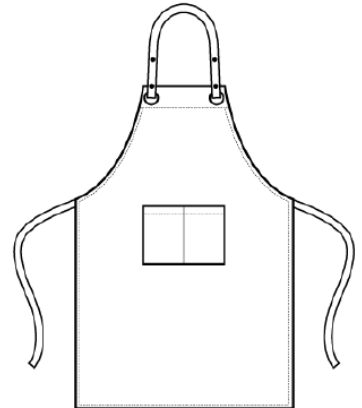
CARTON	PACK	NO. SKU'S
72	12	3



**Fabric**

65% Polyester, 35% Cotton with faux leather trim. 195gsm

Colour	Pantone	C	M	Y	K
Black	Black	0	0	0	100
Khaki	7503	0	12	35	25
Brown	476	30	72	74	84



**Colours** Black/Black, Black/Brown, Khaki/Brown

**Sizes** One size

**Features**

- Faux leather top trim and neckband
- Press stud buttons on neckband for height adjustment
- Metal eyelets on the trim to facilitate neckband
- Two handy pleat pockets measuring 13cm
- Measures 86cm long by 72cm wide

**Country of Origin** Bangladesh

**Carton Dimensions** 60cm x 40cm x 20cm

**Carton Weight** 10kg approx.

**VAT Code** 6211 431 000

**Marketing Description**

This Apron combines polyester-cotton with soft faux leather for a really cool contemporary design. The top of the Apron has a deep faux leather trim with two large eyelets which the neckband loops through. The neckband is adjustable on each side with two press stud buttons. A centre pocket stitched down the middle to create two handy bellow style pockets completes this quirky Apron.

